

PART OF THE NE.1/4, OF SECTION 30, T.7N., R.1E., S.L.B. & M.  
SPRING MOUNTAIN SUBDIVISION No. 2

IN WEBER COUNTY

TAXING UNIT: 36

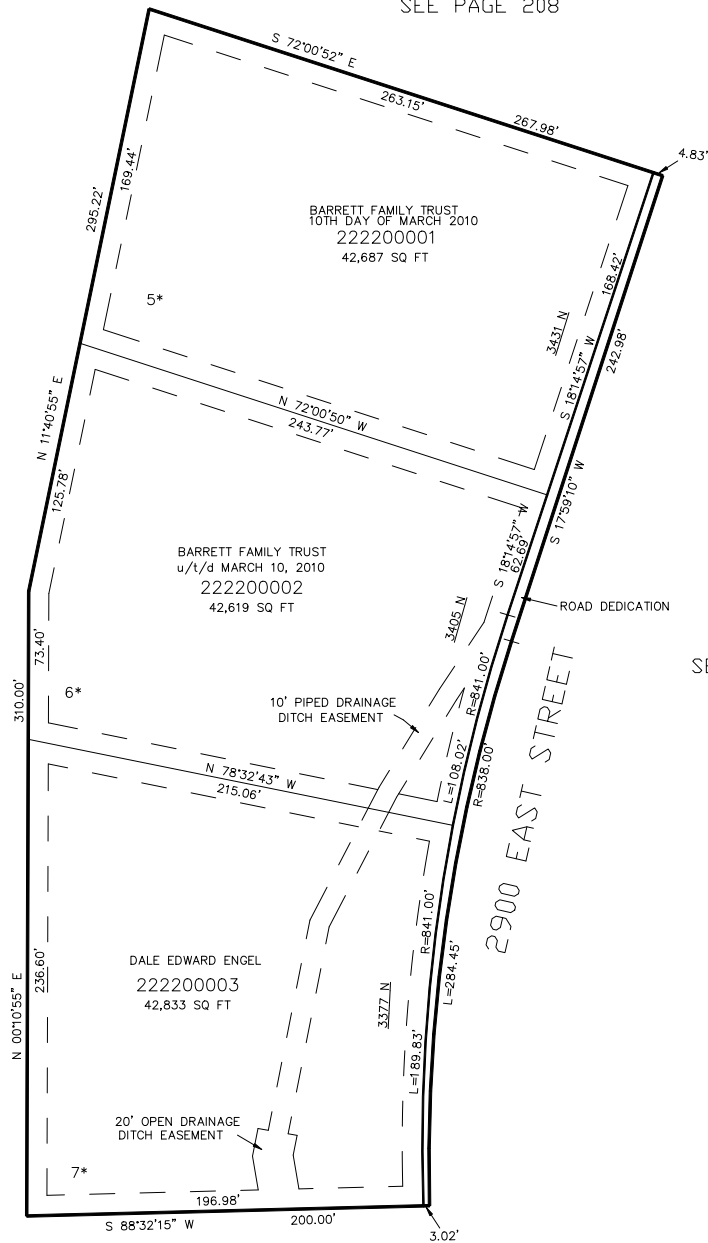
SCALE 1" = 50'

\* FOR BUILDABLE & DRAINFIELD AREA, WELL PROTECTION ZONE, & ALL OTHER EASEMENTS SEE DED. PLAT

SEE PAGE 208

SEE PAGE 25-1

SEE PAGE 25-1



FOR COMPLETE ENG DATA SEE  
ORIGINAL DEDICATION PLAT IN  
BOOK 60, PAGE 69 OF RECORDS.

10' UTILITY & DRAINAGE EASEMENTS EACH  
SIDE OF PROPERTY LINES AS INDICATED  
BY DASHED LINES EXCEPT AS OTHERWISE  
SHOWN.

SEE PAGE 25-1

\*FOR TAX PURPOSES ONLY\*